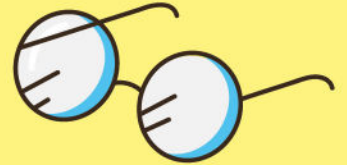


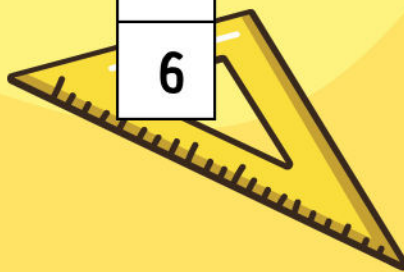
Easy as 1-2-3

Solve the sums below to complete the maths crossword. Aaaaand go!



3	+		=	15		14		2				
		-				-		+	-			
7	+	6	=			3		16	-	5	=	
-		=				=		-		=		
4			+	8	-		=					7
+				-				=				
11			+	3	=	7		15	-	4	=	
=		+		=						+		
		12			+		=	17				3
		=				-				+		
20	-		=						+	8	=	
						=					=	
						6						21

25 = 5²



10 = 5 + 5